

SOUTH NASHVILLE

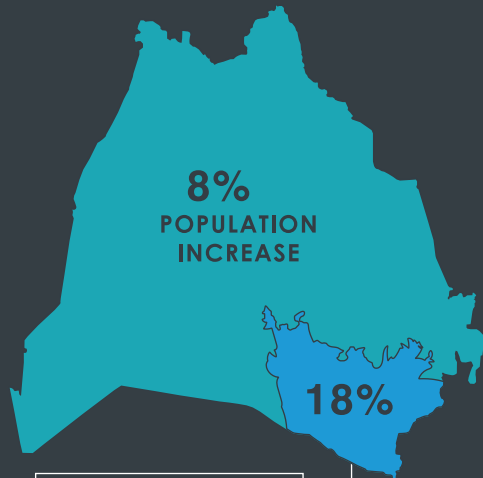
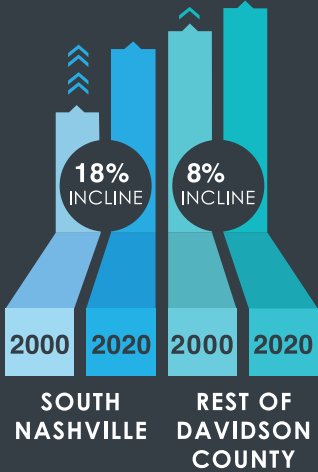
ZIP CODES INCLUDED: 37013 & 37211 | SOURCE: U.S. CENSUS BUREAU, 2020 / EMSI 2021 / JOBSEQ 2021



THE RESEARCH CENTER

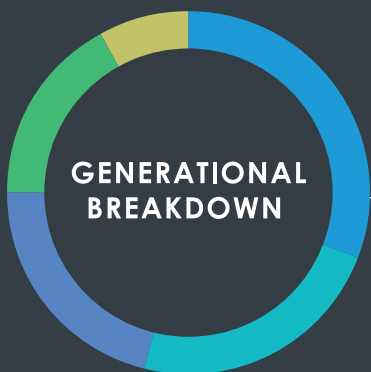
DEMOGRAPHICS

COMMUNITY GROWTH

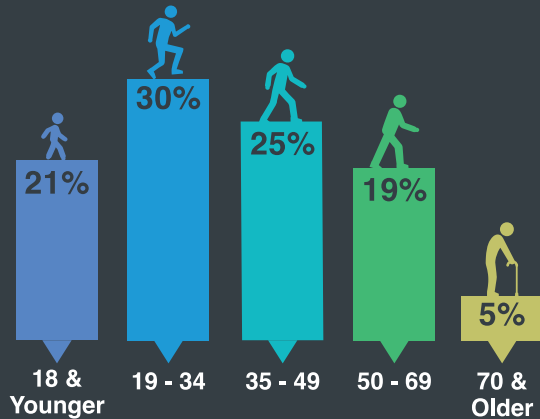


ZIP CODES :
37013 & 37211

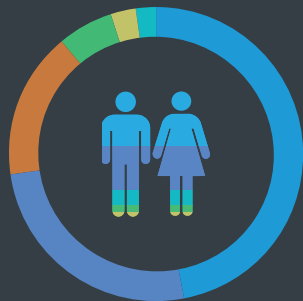
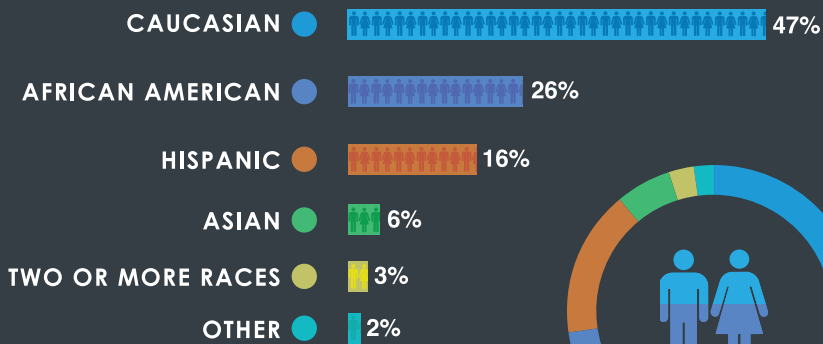
MEDIAN AGE : 31.7



- GENERATION Z
- MILLENNIALS
- GENERATION X
- BABY BOOMERS
- MATURES



DIVERSITY BREAKDOWN



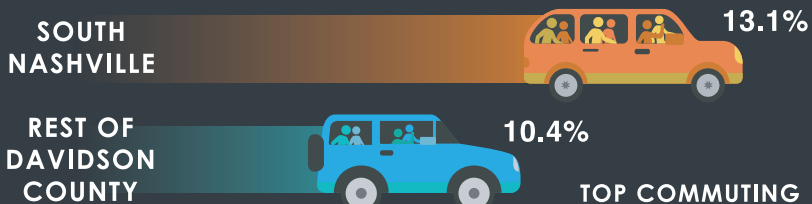
PER CAPITA INCOME

\$54,300

FIFTY-FOUR THOUSAND, THREE HUNDRED

COMMUTING

RESIDENTS WHO CARPOOL TO WORK



TOP COMMUTING DESTINATIONS FROM SOUTH NASHVILLE

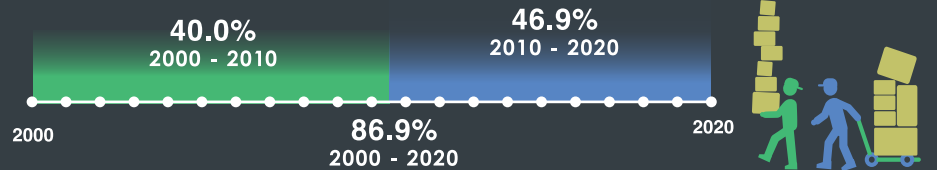
- 37167
- 37214
- 37086

MEAN TRAVEL TIME TO WORK:
27 Minutes

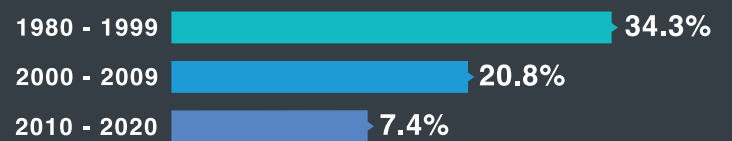
HOUSING



YEAR HOUSEHOLDER MOVED INTO UNIT



YEAR STRUCTURE WAS BUILT



WORKFORCE

56,821
TOTAL EMPLOYEES

5,119
TOTAL BUSINESSES



LABOR FORCE PARTICIPATION



TOP 3 EMPLOYERS

- CAPTAIN D'S HQ
- ASCENSION ST. THOMAS
- ASURION

TOP 3 INDUSTRIES

- ADMINISTRATIVE & SUPPORT SERVICES
- GOVERNMENT
- RETAIL TRADE

SOUTH NASHVILLE'S UNEMPLOYMENT RATE IS 2.8% LOWER THAN THE REST OF DAVIDSON COUNTY

4,751 PEOPLE WORK AND LIVE IN SOUTH NASHVILLE

EDUCATION

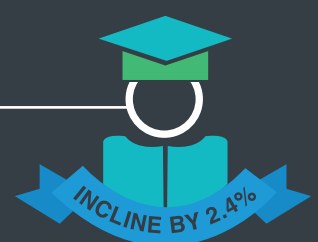
EDUCATION BY POPULATION (25+)

POST SECONDARY EDUCATION 61.7%

BACHELOR'S DEGREE OR HIGHER 31.3%

INCREASE IN EDUCATION ATTAINMENT BACHELOR'S DEGREE OR HIGHER

2000 : 28.9%
2020 : 31.3%



QUESTIONS? RESEARCHCENTER@NASHVILLECHAMBER.COM